



Industrial Tanker Solutions



ABOUT US

Major Equipment Intl Ltd is a manufacturer and international exporter of one of the most comprehensive ranges of agricultural, amenity and site equipment. Our products are manufactured and distributed under the brand name of MAJOR.

In addition to the manufacturing facility and head office in Ireland, we have branches in the UK and the Netherlands to service our extensive customer base.

Established in 1976, the company initially manufactured equipment solely for Ireland's agriculture market. Over the years we have expanded and built on our expertise to allow expansion into other markets.

THE DESIGN PROCESS

The design process is made up of three key phases, the first of which begins with the initial sketch of the idea and teasing out the basic design.

Phase Two involves transferring initial sketches into our CAD software for further processing and theory verification. Re-engineering concepts ensures that the end user is always kept in mind.

A full set of drawings is produced at this stage

Today the portfolio of products includes industrial, effluent and drain cleaning tankers. We also design and manufacture a range of dust suppression and site cleaning tankers.

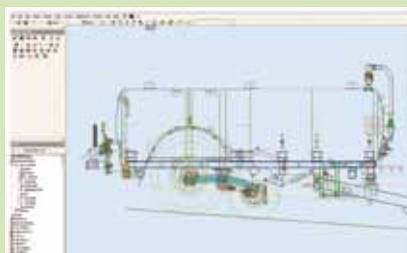
Our company policy is one of continuous product development to ensure efficiency and quality. We have a specialist research and development team who use the latest design software and production technologies available.

As leaders in industrial tanker manufacturing, we are committed to providing you with a high quality product delivered to the desired destination, within the stipulated time period. We also provide a full after sales service and technical assistance.

for approval by the client. Amendments are possible at this stage to make certain that the tanker is produced to the client's specifications.

Phase Three includes the manufacturing and testing of the machine. Our continuous improvement philosophy, quality checks and testing throughout the manufacturing process guarantees a quality product every time.

A professional and prompt after sales service is our pledge to our customers.



OUR COMMITMENT TO THE ENVIRONMENT

We recognise that our business activities have a direct and indirect impact on the environment and we are committed to managing these in a responsible manner.

Compliance with environmental regulations and internal environmental standards such as ISO:14000 are important and through our

products we help companies in the aggregate construction, port and waste management industries comply with their own environmental standards.

We also help clients pro-actively improve their relationship with key stakeholders - employees, customers, shareholders and general public.



2200 GALLON DUST SUPPRESSOR

CLIENT: PINDEN GROUP

The Pinden Group is a specialist waste management company processing a wide range of hazardous and non-toxic materials. The company operates an 80 acre quarry site in Dartford, Kent.

Dust suppression is just one of the issues that Terry Bishop and his team at the Pinden Group face on a daily basis.

Their existing dust suppression unit was becoming unreliable and a larger capacity unit was required to cope with an increased workload including:

- Aggregate processing and quarrying
- Waste management
- Road cleaning
- Dust suppression on internal roads, rock faces and earth storage areas

This tanker has a host of features:

- Water Spinner Dust Suppressor. This unit uses minimal quantities of water and has significantly reduced the Pinden Groups

water costs. It has eliminated flooding caused by traditional splash plate systems.

- Rain Gun Water Cannon: The Pinden Group have four quarry sites all at various levels. The rain gun water cannon is capable of accessing and damping down earth storage clamps up to 220ft high.
- Suspension. Allows the tanker to access steep gradients safely while fully loaded.
- Wash down facility. This is used for washing machinery and weigh bridges.

What our customer has to say:

“The commitment to provide a clean and safe working environment for our staff and local residents is paramount. The Major Dust Suppression tanker has ticked all the boxes. Its has proved invaluable as a weapon in our constant battle to maintain dust control. The machine was fully installed on site with operator instruction to comply with our HSE obligations. If dust is your problem, we would highly recommend a Major Dust Suppression Tanker for the task” Terry Bishop, Managing Director, The Pinden Group



2200 ROAD BLASTER TANKER

CLIENT: VIRIDOR WASTE MGT

Viridor Waste Management is one of the UK's leading resource and waste management companies. They work with over 30 local authorities and thousands of private customers. Viridor manage 240 sites and facilities around the UK. Their range of services include recycling collections and large scale contracting services

Viridor approached Major Equipment to design and build a tanker to be used for dust suppression and cleaning access roads, wash areas and weigh bridges.

MAJOR designed the 2200LGP Dust Tanker complete with blaster bar, water spinner and brush. This tanker ticked all the boxes, in particular the blaster bar as Major Equipment were the only company to offer this feature.

The sweeper which is fitted at the rear of the tank swivels from left to right clearing debris into the gutter. The dust spinner unit atomises and disperses water far more effectively than any other similar system available.

It also eliminates flooding and helps facilitate Viridor's compliance with environmental legislation. The hydraulic vacuum pump also ensures compliance with their own Health and Safety policies.

This is what Terry Mutton from the Viridor Heathfield site had to say:

"MAJOR designed and built a 2200 Gallon Dust Suppression Tank for us. We use it for cleaning access roads - the blaster bar does a great job!"

"We also use it for dust suppression in landfill sites and in the wheel wash area. I would have no hesitation in recommending Major Equipment"





1600 GALLON DUST SUPPRESSOR

CLIENT: ASD METAL SERVICES

ASD metal services are the largest independent metals stockholder and distributor in the United Kingdom.

This 1600 gallon tanker, which is transported by forklift, was designed for ASD metal services to suppress dust in a large steel holding yard.

The main constraint of this project was to design a system that suppressed dust but did not splash the steel or damage the ground in the process.

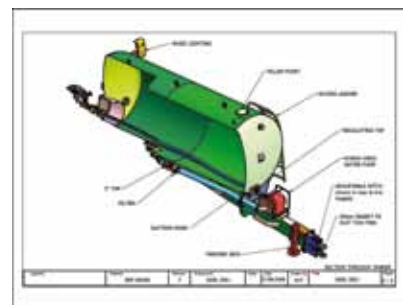
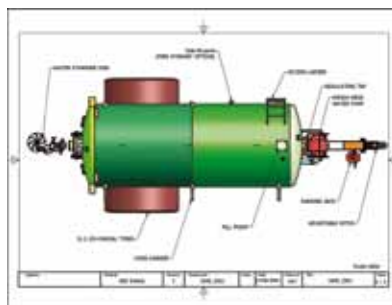
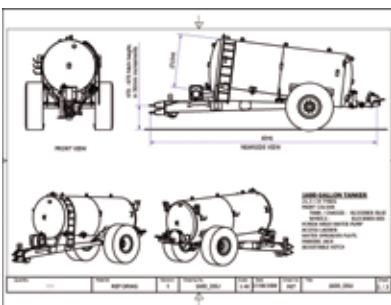
Major Equipment designed a pump driven sprinkler system, similar to a garden sprinkler, to solve this problem for ASD.

Chris Sentance and his team were involved at

each stage of the design process to ensure that their exact specifications were being met.

What our customer had to say:

"We needed a solution for dust suppression at our steel stockholding facility in Leeds. We required a product that effectively suppressed the dust but avoided splashing the steel or damaging the ground. Having talked with a number of suppliers we decided to go ahead and buy from MAJOR. We received a high quality product tailored to our specifications and budget. Throughout the process we were kept up to date and the after sales service has been great. Overall we are very happy" Chris Sentance M.Eng, Technical Engineer, ASD metal services.





3000G DUST TANKER

CLIENT: PORT OF TYNE

The Port of Tyne is a deep river port, a distance of 4kms from the mouth of the river Tyne in Newcastle, with round-the-clock access. In addition to cargo handling services over 800,000 passengers go through the port each year.

Dave Millings, the Dock Manager contacted Major Equipment because a unit was required by the port to suppress dust on an industrial scale. The team at MAJOR designed the 3000G Dust Tanker which sits upon a skeletal tandem axle lorry trailer.

Up to this point, all dust suppression activities in the port were sub-contracted out. Contractors could only use metered water at great expense.

This unit allows the Port of Tyne operator to take water directly from the dock in place of metered water resulting in substantial savings.

An engine and pump are mounted on the rear of the tanker for ease of access when washing the tank. To suppress dust throughout the

dock, two outlets were positioned underneath the tanker towards the rear of the unit.

The raingun fitted to the top of the tanker is used for damping the coal bings and has vertical and horizontal control. All these features are controlled remotely using a radio transmitter remote control box. This offers the operator a safer working environment and greater flexibility.

This product was shortlisted for an SED Award of Excellence in 2007. Below is some feedback from our client Dave Millings, Dock Manager at the Port of Tyne.

“After my initial enquiry to Ivor Dobson at Major Equipment to build a specialist tanker he visited our site and within days came back to me with detailed plans for a 3000 gallon tanker. On our agreement the tanker was built.”

This machine has surpassed our expectations and any wear and tear parts we have needed have been received promptly from Major.”



2400 DUST SUPPRESSOR

CLIENT: BORD NA MÓNA

Bord Na Móna is Ireland's leading utility service provider encompassing electricity, heating, resource recovery and water.

To ensure compliance with local planning legislation, Bord Na Móna tendered for a dust suppression tanker. The tanker was to be used for washing the road network within the company's site and for general dust suppression.

Major Equipment designed a 2400LGP tanker fitted with a PTO powered vacuum pump with hydraulically controlled vacuum and pressure settings

A centrifugal pump delivers six bar pressure to the blaster bar and can be horizontally adjusted for close contact road cleaning.

A hydraulically powered reverse action road sweeper was fitted to the rear of the tanker on a four point linkage system. The sweeper can be tilted and locked into position 30 degrees in either direction.

To allow this tanker to travel the public roads safely and legally it sits upon a full commercial braked axle with 30.5 R32 tyres. It is fitted with a full road lighting kit with flashing beacons fitted to the front and rear of the tanker.

For operator comfort and safety, all the hydraulics are controlled via a control box from the tractor cab.





2400 DRAIN BEAVER TANKER

CLIENT: *BLACK SLUICE*

The Black Sluice Internal Drainage Board is the authority set up to control water levels and reduce the risk of flooding within the Board's area. It operates 34 pumping stations and maintains 500 miles of watercourses throughout Lincolnshire.

The tanker is used for jetting out drainage culverts up to 48" in diameter. This helps to prevent flooding thus reducing the massive costs associated with flood damage.

The design team at Major Equipment produced a 2400LGP Drain Beaver complete with a high pressure pump, hydraulic retractable jetting reel and plough jet nozzle. The powerful water pump delivers 280 l/min at 205 bar pressure.

Before Black Sluice approached Major Equipment, all jetting works were subcontracted to private operators. Taking this work back in-house has resulted in increased efficiency and has allowed a greater number of drain blasting operations. As part of the service Major Equipment conducted an operator training day

to comply with health and safety regulations and improve operator efficiency.





3500 CHALLENGER TANKER

CLIENT: MURPHY CONTRACTING

The Challenger 3500 Gallon Tanker was designed and built for Murphy Contracting in Co. Kilkenny.

This company contracts a range of services including drain and sludge clearance, road cleaning, dust suppression and agricultural slurry injection.

This unit had to be suitable for use on public highways. For this reason it is fitted with a commercial lifting axle, double set of road lights and rear facing plough lights.

This allows the operator to move from site to site safely. The combination air/hydraulic brakes also ensure operator safety during road transport.

All hydraulics are controlled by electric spools straight from the tractor cab saving the operator time.

The tanker also features a water blaster bar fitted under tanker for road cleaning and dust

suppression purposes.

A buttress is fitted to rear of the tanker to accommodate a four point linkage 6.4m trailing shoe slurry applicator which allowed the company to expand the range of services it provides.

What our customer had to say:

"We are delighted with this machine. There are no extra running costs despite the size of the tanker and the extra weight of the trailing shoe. We hope to buy a second unit this year and would not look to any other supplier"

Nicolas Murphy, Murphy Contracting, Kilkenny.





SELF PROPELLED DUST TANKER

CLIENT: QUATTRO UK

Based in London, Quattro (UK) Ltd offer a broad range of services including road haulage, plant hire and waste management.

They are just one of a growing number of plant hire companies contracting out specialist dust suppression machinery to the construction, quarrying and demolition industries.

Eamon O'Loughlin and his team at Quattro (UK) Ltd approached other manufacturers but no other company had the expertise to design and manufacture the tanker required.

Major Equipment designed a 1600 gallon tanker incorporated into a Hydrema Dump Truck. It is hired out by Quattro (UK) Ltd to construction companies to control dust in the working environment.

The tanker has a hydraulically operated 8000 litre vacuum pump which is protected by a top and syphon trap.

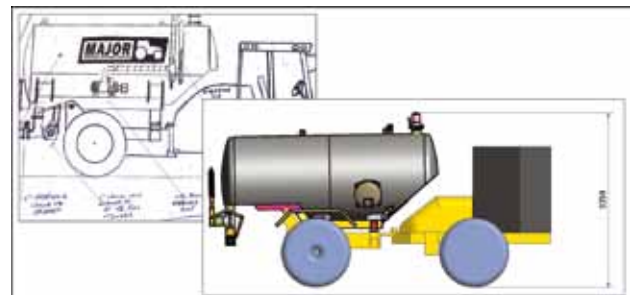
The 2" full length sight glass and 3" glass eye

mounted on the front and rear of the tanker allows to operator know when the tanker needs to be refilled.

The custom built 20" hinged door to the side of the tanker allows the operator safe access to the tanker when cleaning is required.

There is a hydraulically operated rear gate valve and a manual side valve complete with an OMAG 6" quick coupling.

The 6 hose hangers to the side of the tanker keeps all the pipe work in place. This is particularly important during transport between sites.



10 REASONS TO BUY A MAJOR TANKER

- 1.** The drawbar and chassis are independent from the tank unlike competitors' machines where the tank and chassis is one unit. The MAJOR design stops cracking and extends the life of the tank.
- 2.** The main tank barrel is 6mm thick and sits on support plates. This helps ensure that the tank doesn't crack.
- 3.** The dished ends on MAJOR tankers are 6mm steel and are robotically welded to increase the strength of the tank.
- 4.** The back door on MAJOR tankers is 30" (75cm) to allow ease of access to maintain and clean the tanker. The industry standard is a much smaller 20" (51cm).
- 5.** A MAJOR tank is fully baffled which prevents wave motions thus increasing operator safety
- 6.** All MAJOR tankers have supports within the tanker to keep the tanker in good working order.
- 7.** There are four fill points as standard on all MAJOR tankers. One is complete with a gate valve with the three remaining points available for future use.
- 8.** High speed axles are fitted as standard on MAJOR tanks and are certified to 100km/hr by the axle manufacturer. This is only offered as an optional extra on competitors tanks.
- 9.** We use quality suppliers for raw materials and components. For example we use Battioni pumps on all our tankers. These are a tried and tested product in the industry, with a full spares service available.
- 10.** MAJOR tankers hold their value. You will always get more for a second hand MAJOR than a similar product from another manufacturer.

RECENT AWARDS & ACHIEVEMENTS

Chamber of Commerce Award for Business Growth – 2008 Winner
SED Awards for Excellence for "Transport" – 2008 Runner Up
Irish Exporters Association for "Manufacturing" – 2007 Runner Up

HEAD OFFICE

Major Equipment Intl Ltd
Coolnaha, Ballyhaunis, Co Mayo
Ireland

Tel: + 353 (0)94 9630572

Fax: + 353 (0)94 9630788

UK OFFICE

Major Equipment Ltd
Major Industrial Estate, Middleton Road, Heysham, Lancashire, LA3 3JJ
UK

Tel: + 44 (0)1524 850501

Fax: +44 (0) 1524 850502

NETHERLANDS OFFICE

Major Equipment Intl Ltd
Postbus 29, Dedemsvarrt, NL-7700AA
Netherlands

Tel: +31 (0)6389 19585

Fax: +31 (0)523 615451